

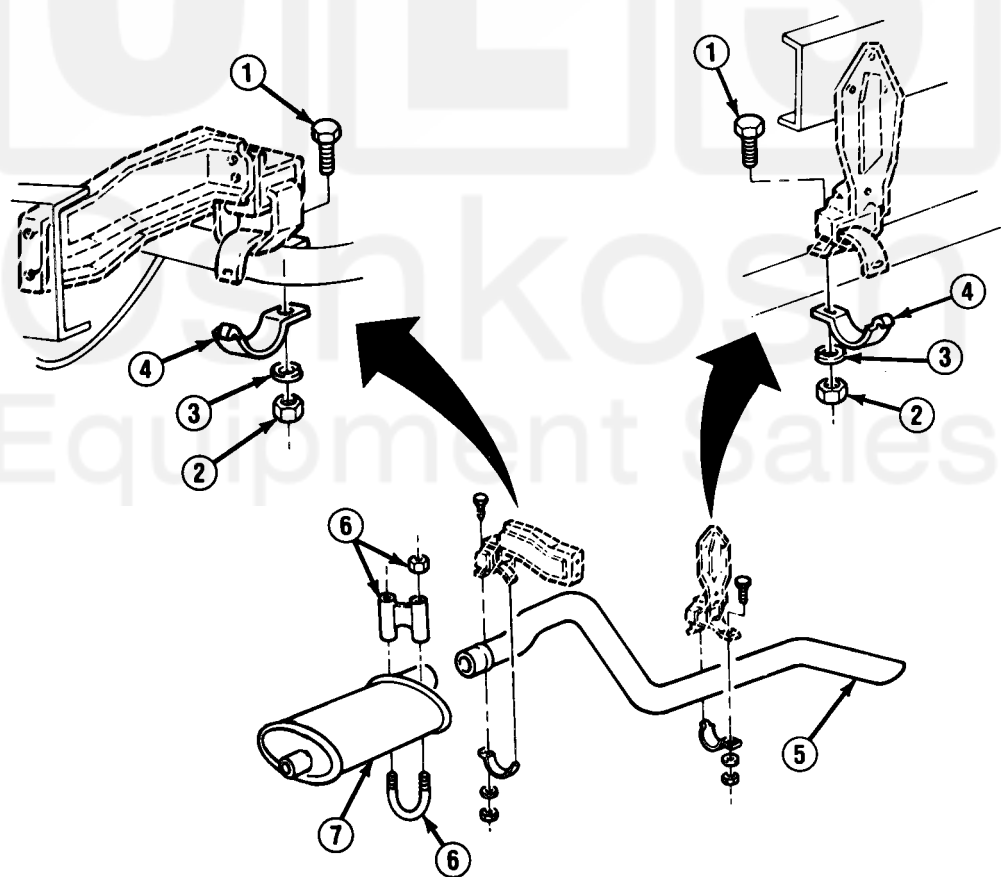
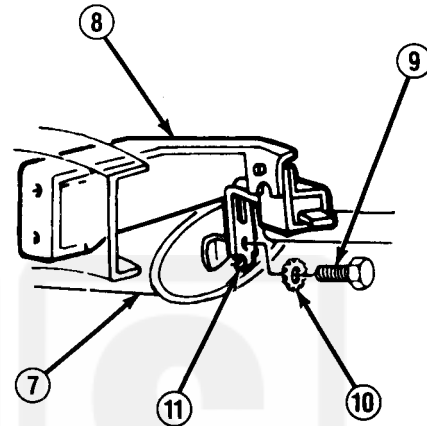
3-27. EXHAUST PIPE, MUFFLER, AND TAILPIPE REPLACEMENT (Con't).

- 7. Install muffler (7) to exhaust pipe (17) with clamp kit (16) using 2 new lockwashers.

NOTE

Perform step 8 only if working on M1009.

- 8. If removed, install new hanger (11) to support assembly (8). Install hanger to muffler (7) with new lockwasher (10) and bolt (9).
- 9. Install tailpipe (5) to muffler (7). Install tailpipe to 2 hangers at frame with 2 clamps (4), bolts (1), new lockwashers (3), and nuts (2).
- 10. Install clamp kit (6) at rear of muffler (7) using 2 new lockwashers.



TA49825

